

Newsletter



FREE. QUARTERLY. FIRST EDITION

March, 2015 | www.klda.or.ke | www.facebook.com/karenlangata | Join Us Today!



Editor's Note

By Rose, Communications

Welcome to the first edition KLDA newsletter for 2015.

The year has started well with many residents joining the association. This is encouraging for KLDA and we look forward to registering many more new members.

This year we are issuing membership cards. All members who have paid their subscription can collect their membership cards from the KLDA office at the Karen Connection Complex on Karen Road. All subscriptions fund the Association's activities as we focus on serving the Karen/Langata community. Thank you for your support.

Interest On Land Rates

It has come to our attention that some residents are advising others not to pay their land rates

to KLDA. They claim that the Association uses the interest, accrued over the years, but that the monies do not serve the community. Please be advised that the interest is held in trust until such time that a special rates account is opened by the Nairobi City County, as specified by the Court Order of 1998. Once the Nairobi City County rates account is opened as per the court order, the amount held in trust will be deposited.

If you need more clarification please feel free to seek the facts from the KLDA office, or ask us more at the AGM on Wednesday 18 March 2015. (See back page for more details.)

Happy reading.

Inside: First Edition

Land Rates Petition update 1



Updates have been sent out to members through KLDA E-News on land rates this year...2-3

2

Progress on Mbagathi River Study



KLDA and WRMA now have six months of data with a further six months of collection planned...4-6

Security Report 3



The Karen & Langata Community continues to experience rising insecurity...7

Updates on our Roads...8
Members' Ads...9
AGM Notice...10



“
Last year, KLDA petitioned against the increment of land rates by the Nairobi City County.
 ”

Land Rates 2015

Now you can pay your land rates through MPESA

Those members who are on email will have received the KLDA E-News with updates on land rates this year. We have advised members who pay their rates to KLDA that this year they should pay the 2013 rate (and not the 2014 incremented rates), as we await the ruling of the land rates increment petition. However, those who would like to carry out subdivisions, or obtain

change of user permission, will have to pay the current rates demanded by the County, so as to obtain the relevant clearance certificate

Last year, KLDA petitioned against the land rates increment imposed by the Nairobi City County. KLDA lawyers attended court on 28 January and 23 February 2015 when the matter came up for mention regarding a date for highlighting of submissions. The next

court hearing will be on 19 May 2015 at 10:00 am. Our lawyers will attend and we will keep you posted.

Demands For Payment From The Nairobi City County

The Nairobi City County has sent demand notes for rates (and interest) to land-rates payers in Karen who pay through KLDA. We dealt with this issue last year by writing to the Legal Affairs

NB: Please Note The Different Account Numbers For Rates And Subs

Department of the Nairobi City County through the KLDA lawyer.

However, the County continues to hand deliver the demand notes to residents, who are now concerned that the 14 day period allowed for payment of these (outrageous) land rates will lapse and they might find themselves in court. The demand notes should not cause panic. We will handle this issue on your behalf through our lawyers.

Land Rates Payment

It is now possible to pay your land rates through MPESA. Please use Account Number 00800214031204 and Paybill Number 542542

Kindly add Ksh 66.00 to cover bank

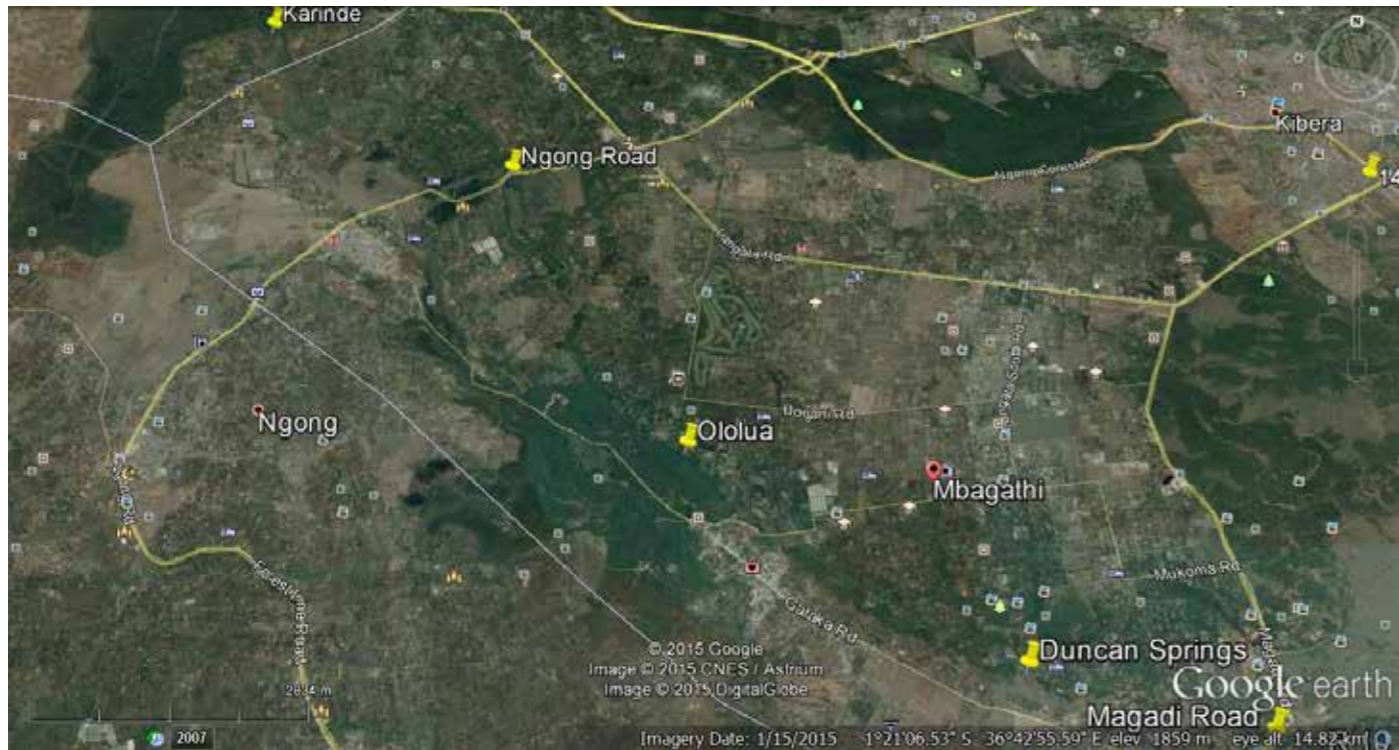
charges.

Once you have sent the money, please forward the SMS notification to KLDA on 0718923861, indicating the name of the property owner and the LR number, to ensure that we credit the right account.

KLDA Membership

You can also pay your membership fees using MPESA. Please send Ksh 5,000.00 to Account Number 00800214031201 and Paybill Number: 542542 adding Ksh. 66.00 to cover bank charges. Once you have sent the money, kindly forward the SMS notification from your mobile phone to KLDA number 0718923861





Progress: Mbagathi River Study

Upper Mbagathi River Environmental Survey

Under a project funded by a legacy left by former Karen/Langata resident, George Drew, data have been collected for the purpose of planning and monitoring river utilisation, in particular by the Water Resources Users Association (WRUA). KLDA and the Water Resources Management Authority (WRMA) now have six months worth of data, with a further six months of collection planned

The project boundaries are at the source at the springs, known as Karinde – a corruption of Karen End – and the exit from the KLDA domain at the Magadi Road bridge. Five sampling points were selected along the river in the locations shown on the Google Earth image above; a sixth at Ushirika Road would have increased the value of data collection.

River flow, E.coli content and

Biochemical Oxygen Demand (BOD) data are shown graphically. In some cases E.coli content was outside the range of possible measurement. Many other indicators of quality have been measured – turbidity, dissolved oxygen, nitrates and so on – but are not reported here due to limited space.

At the end of the project the complete data will be published.

“Data have been collected for the purpose of planning and monitoring river utilisation...”

To find out more read the mito safi blog - see <https://kldaenvironment.wordpress.com/2014/11/18/all-about-mbagathi-river-study/>.

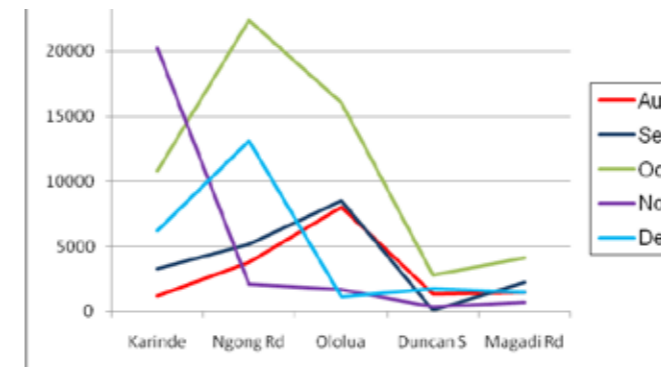


Figure1. Daily flow at stations at monthly intervals in cubic metres

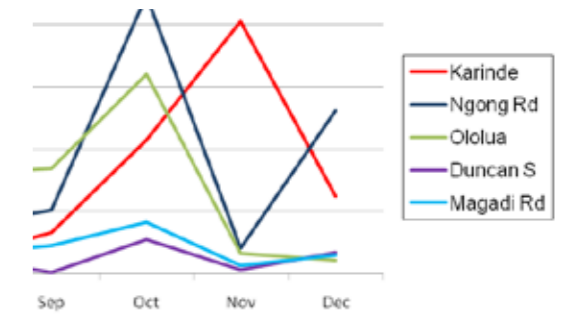


Figure 2. Daily flow on survey date by month in cubic metres

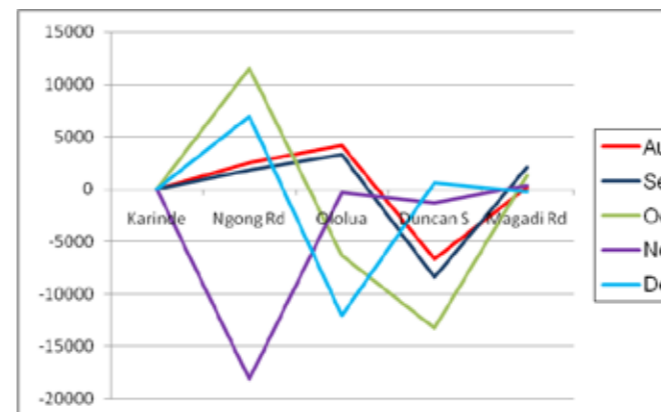


Figure3. Difference in flow at monthly intervals in cubic metres

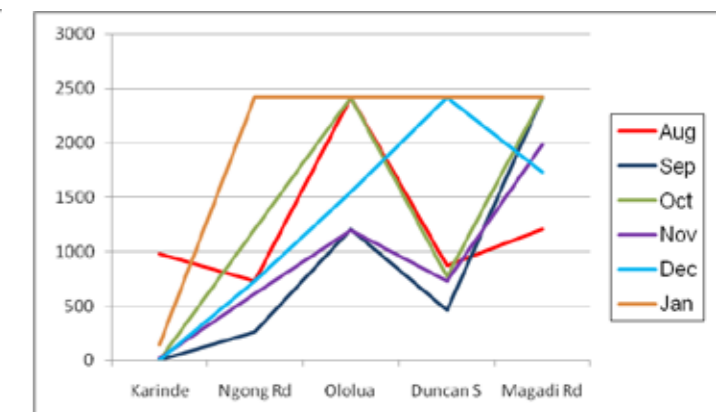


Figure 4. E.coli content at monthly intervals in MPN of Coliforms/100ml

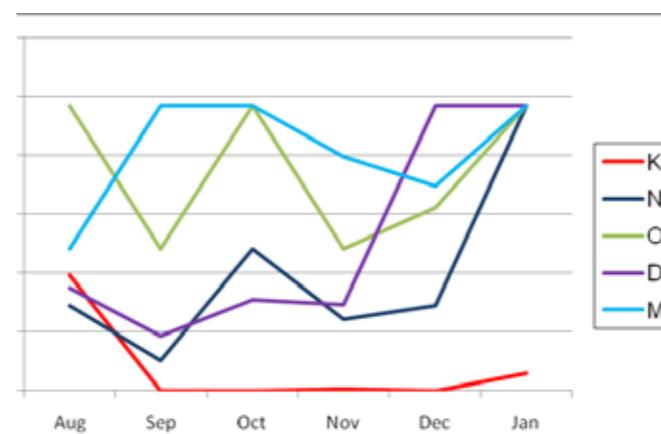


Figure 5. E.coli content on survey date in MPN of Coliforms/100ml

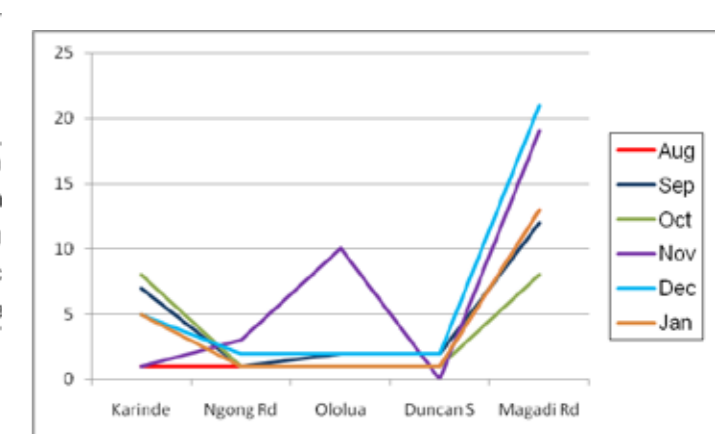


Figure 6. BOD5 at monthly intervals in mg of Oxygen

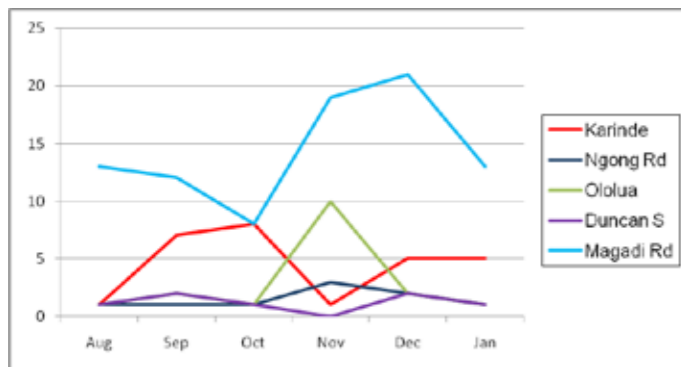


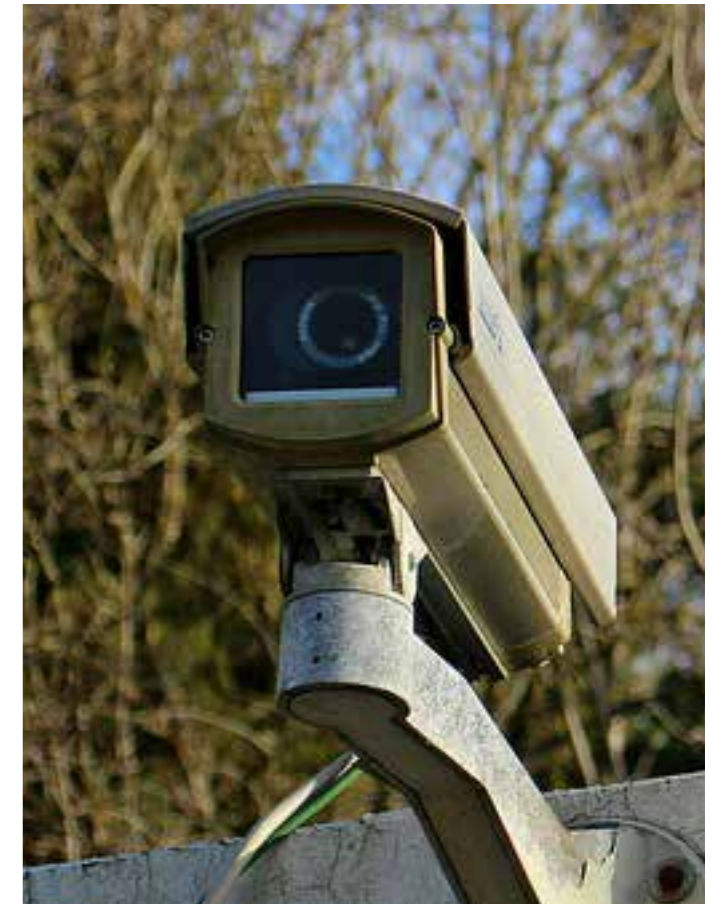
Figure 7: BOD5 on survey date in mg of Oxygen

“
The project boundaries are at the source at the springs, known as Karinde – a corruption of Karen End – and the exit from the KLDA domain at the Magadi Road bridge.
 ”

A Rise in Insecurity

Karen and Langata District Association

The common radio frequency has been acquired by KLDA and registered by the Communications Authority of Kenya.



As Karen & Langata continue to experience rising insecurity the community is taking extra measures by alerting each other and forwarding the information to the police. In addition, KLDA has been sending security alerts to residents through the KLDA E-News so that they are aware and vigilant.

Late last year, one of our members, Bob Paterson, proposed the registration of a Common Radio Frequency to be used by private security firms in the community. The common radio frequency has since been acquired by KLDA and registered by the Communications Authority of Kenya. KLDA is currently trying to persuade security firms in the area to use it.

Chris Everard, General Manager of Ultimate Security mentioned the Common Radio Frequency at the Kenya Security Industry Association Annual General Meeting held in January 2015 and attended by all major security companies. However, none of them expressed interest in linking to it. KLDA will obviously recommend those security firms that have bought the Common Radio Frequency and those that are willing to support the Association's initiative in enhancing security.

We thank Bob Paterson for the proposal and Chris Everard for his endeavours to ensure that security firms buy into the idea. KLDA will ensure that as many

private security firms as possible begin to use the radio frequency.

The number below can be used to report security issues at any time. Save it and share it with your friends. It's efficient.
 020-2724154

Social Media

The KLDA social media platform (Facebook and Twitter) is actively being used and followed by the media in highlighting our issues to the authorities. We are encouraged by the fact that the Standard and Nation newspapers visit our social media pages quite often to gather stories.

Facebook: karenlangata
 Twitter: KLDA_Nbi @klda

“
The number below can be used to report security issues at any time. Save it and share it with your friends. It's efficient.
 020-2724154



Alarm Response
Intruder Alarms
Road Rescue
Emergency Escort
Fire Response
Access Control
CCTV
Electric Fence/Gate
Vehicle Tracking Solutions
Close Protection

P.O. BOX 46175 - 00100 NAIROBI
 TEL: 3875475, 3866475/85, 2700488 FAX: 3875452
 MOBILE: 0733959284, 0722787711
 EMAIL: sales@ultimate-security.net
 www.ultimate-security.net



ULTIMATE TRACKING SOLUTIONS

- ➔ Fleet Management
- ➔ Vehicle Tracking & Recovery
- ➔ Driver Monitoring

020-2345360 / 020-2695681
 0720-974353 / 0735-720782

www.ultimate-tracking.co.ke



SECURITY GUARDS SERVICES
 Started in 1969 as the forerunner to the ULTIMATE group of companies. We provide:

- Manned Guarding
- Guard Dogs
- A range of hi-tech real time Guard Monitoring Systems

Tel: 3876124 / 3872469
 Mobile: 0720974353 / 0735720782



Completion Of The Langata Road Near The Bomas



“
Driving in Karen is becoming more and more difficult during the morning and evening rush hours.”

We are happy to report that the road near the Bomas of Kenya will soon be complete following KLDA follow-up with the Roads Authority. The compensation query between the Lands Commission and the stakeholders has been settled and the contractor will begin work on the remaining section of road in March 2015

Traffic Congestion At Karen Shopping Centre

Driving in Karen is becoming more and more difficult during

the morning and evening rush hours. Traffic congestion starts from Langata Road and continues all the way to Karen Shopping Centre. The KLDA planning team has had meetings with the roads authorities to discuss how to alleviate the traffic congestion.

We are pleased to tell you that we will be partnering with Kenya National Highways Authority (KenHA) and other stakeholders in Karen to review the traffic flow patterns at the Karen Shopping Centre, in a bid to

reduce the congestion and to ease the flow of traffic in the area.

Site visits were conducted for all the intersections connecting to the roundabouts (Karen-Bomas section, Karen-Dagoretti section and Karen-city centre section) encompassing about 1km from the roundabout. Findings and recommendations on the way forward are to be in line with the proposed design for the expansion of Ngong Road (C60/C61) and the Bomas-Karen-Dagoretti Road (C63).



House To Let

House inside a 150 acres of forested giraffe sanctuary, near Banda School, borehole water, 4 bed and 3 bath, secure but not electrically fenced. The house is old but totally refurbished and has rustic charm. Giraffes and warthogs in the garden! Anyone interested should contact Mike Bell to see around. His number is 0786434142. If out of reach , leave an sms.

Plots For Sale

1 acre at Kshs. 45Million Ngong View.
 2 by 1 acres at Kshs. 55 Million within Ngong View Estate. Somewhat negotiable
 2. 5 acres off Bogani Road. 1 acre at Kshs.50 Million also slightly negotiable.
 Contact Rachel Wahito at 0702172244 for more information.

Shayana Bar and Grill

At Karen Connections Complex, Karen Road. Walk in for delicious breakfast, Lunch and Dinner.



Selling And Letting

Muhugu Park and Tipuana Tundo-style country homes at Kshs. 75Million.
 Marula Gardens selling at Kshs. 77 Million.
 Contact Added Value Group Ltd. 0726823402

THE NGONG ROAD FOREST



... do you know?

1. Section 1 of the Ngong Road Forest is now fenced and secure.
2. You can walk, jog or ride your bike with tranquility, safety and in a quiet environment.
3. You can picnic and bird watch.
4. Indigenous trees and tree shrubs for sale – You can buy from a wide variety. Support our community tree nurseries.



For enquires, Contact us on:

Postal Address: Ngong Road Forest Association P. O. Box 688 - 00502 Karen, Nairobi
 Email: office@ngongforestsanctuary.com | Website: www.ngongroadforest.com
 Mobile: 0722 201185 / 020 4449147 | Blog: ngongforest.wildlifedirect.org



NOTICE

Annual General Meeting (AGM)

Date

18th March 2015

Starting Time

6.00pm

Venue

Tamambo Karen Blixen
 Coffee Garden,
 Karen Road



Social Thereafter

Eng. Erastus Mwongera
 Chairman

RSVP no: 0718923861

‘ We owe it to ourselves and to the next generation to conserve the environment so that we can bequeath our children a sustainable world that benefits all.’

- Wangari Maathai